

SMART Board™ Interactive Whiteboard Specific Features In Starry Night

The newest generation of the SMART Board™ interactive whiteboard supports multiuser writing and common multitouch gestures recognized in Microsoft® Windows® 7 and Mac Snow Leopard®/Mac Lion®.

Starry Night now supports specific finger-gestures and pen-gestures that allow you to take full advantage of Starry Night on your touch-enabled SMART Board™.

Note: Refer to the Touch Gestures section in your SMART Board™ interactive whiteboard system manual for additional information on general multitouch gestures and best practices.


Using Starry Night Specific Finger-Gestures


You use your fingers to perform Starry Night specific gestures. Finger-gestures in Starry Night include:

1. Adjusting your field of view
2. Changing elevation above a planet or any other solar system object
3. Changing your viewing direction
4. Rotating an object in space
5. Displaying contextual menu options

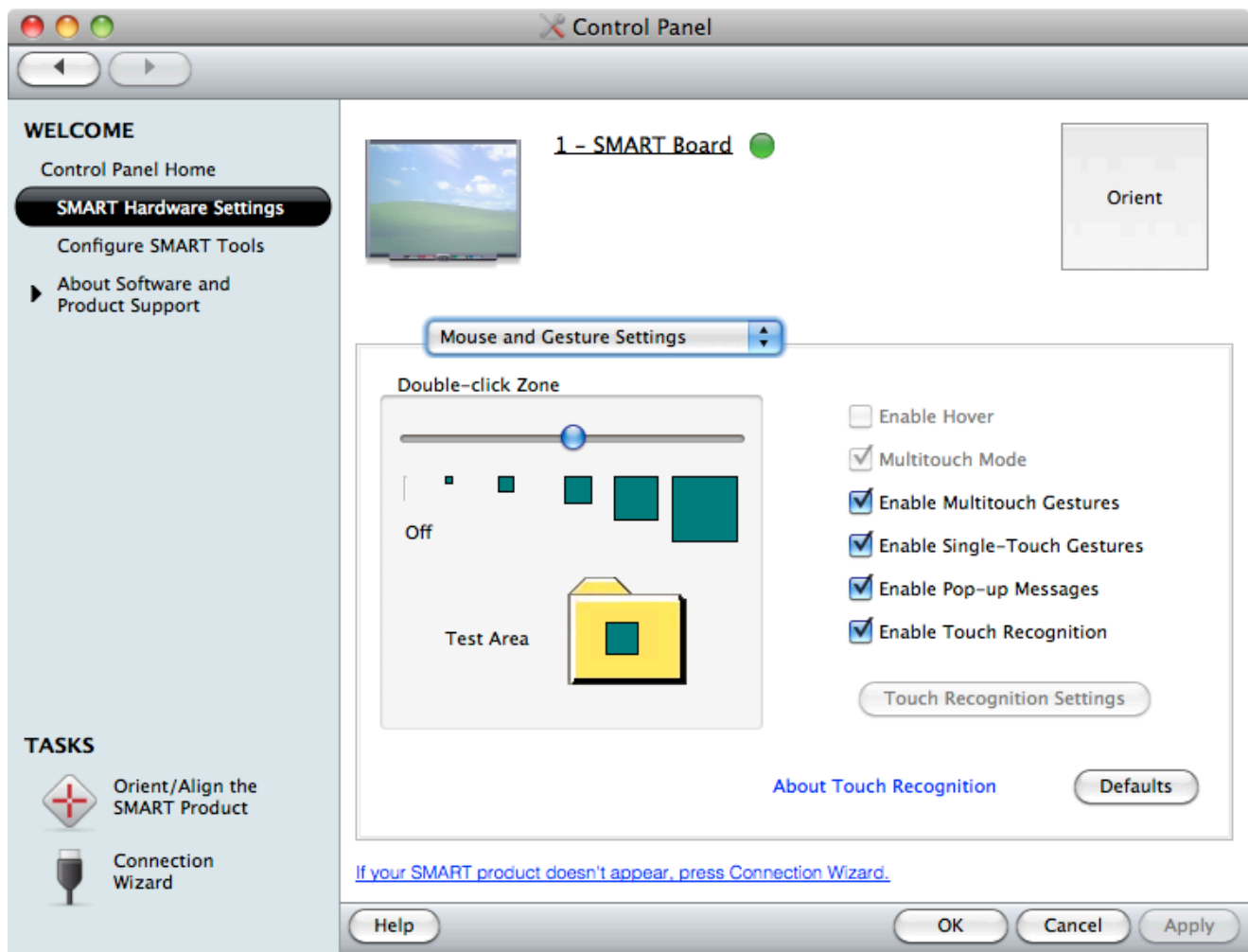
Enabling Multitouch Gestures

Multitouch gestures are **disabled by default** and must be enabled first.

1. Press the **SMART Board** icon  in the notification area, and then select **Control Panel**.

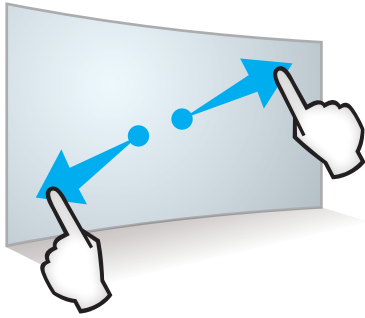
Note: *If your computer isn't currently connected to an interactive product, the SMART Board icon includes an X in its lower-right corner.* 

2. Press **SMART Hardware Settings**.
3. Select **Mouse and Gesture Settings** in the drop-down list.
4. Check the box labelled “Enable Multitouch Gestures”.



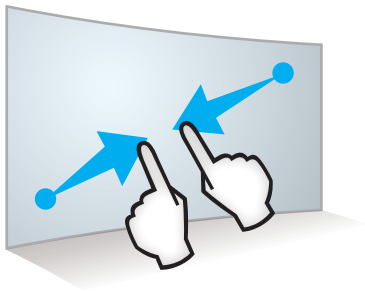
1. Adjusting your field of view

The amount of sky that you can see is called the field of view. You can increase or decrease your field of view using a two finger gesture.



Zoom In

Select an area in the sky you want to zoom in (decrease your field of view). Using one finger on each hand, press the screen at opposite ends of the sky. Drag your fingers in opposite directions.

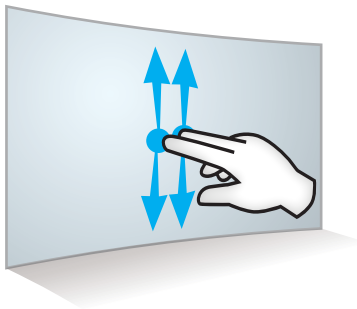


Zoom Out

To zoom out (increase your field of view), choose an area you want to zoom out from. Using one finger on each hand, press the screen at opposite ends of the sky. Drag your fingers toward each other.

2. Changing elevation above a planet or any other solar system object

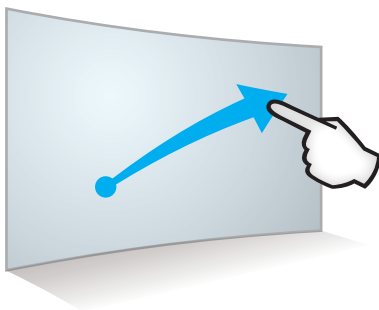
You can change your elevation above a planet's surface in Starry Night with the elevation gesture.



Using two fingers on the same hand, press and hold the screen. Keeping your fingers on the screen, move up or down to increase or decrease your elevation above an objects surface. Release your fingers when you're satisfied with the view.

3. Changing your viewing direction

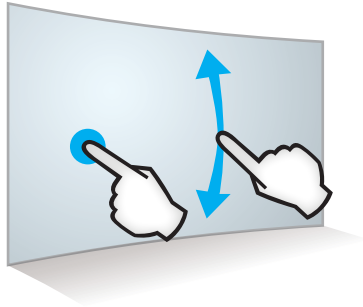
Starry Night always opens with your view facing south, looking slightly above the horizon. You can adjust this view to look in any direction using a finger gesture.



Press and hold an area of the sky. Keep your finger on the screen, and slowly move your finger to drag the sky around. When you reach the position you want, release your finger.

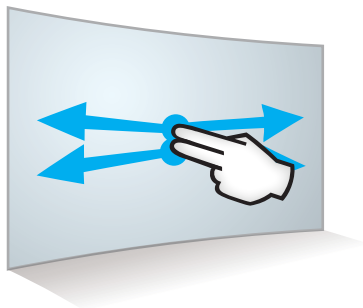
4. Rotating an object in space

This gesture is particularly useful when you've lifted off into space and want to adjust your view of the planet or any other solar system object below you.



Rotating an object up and down

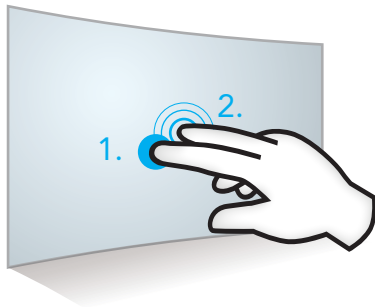
Place one finger on either side of the object you want to rotate. Keep one finger stationary, and quickly move your second finger up or down. Release your fingers from the screen when you're satisfied with the view.



Rotating an object left and right

Using two fingers on the same hand, press and hold the screen. Keeping your fingers on the screen, move side to side to rotate around an object left or right. Release your fingers when you're satisfied with the view.

5. Displaying contextual menu options



An object's contextual menu provides a list of actions in Starry Night that can be performed on an object.

Using two fingers on the same hand, 1, press and hold the screen with your left finger and then 2, press the screen once with your right finger. This opens the object's right-click or contextual menu for the object located nearest the stationary finger.

Lift your left finger from the screen, and then select a menu item with one finger. Touch anywhere else on the screen to close the menu.

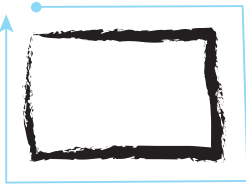
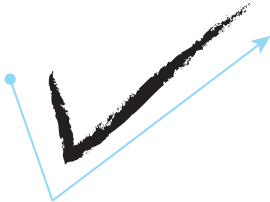
Using Starry Night Specific Pen-Gestures

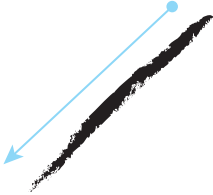

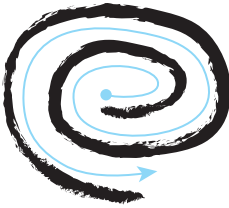

Pen-gestures are shapes or symbols drawn on the simulated sky using the SMART™ Board pen. These pen-gestures allow immediate access to functionality that might otherwise not be as easy to use.

All but one of these pen gestures affect individual objects in the sky.

Pen-gestures in Starry Night include:

- Magnifying a specific area of the sky
- Selecting and labeling an object
- Magnifying a specific object
- Flying to an object in 3D space
- Showing information about an object

Gesture	Function	Description
 <p data-bbox="186 1102 389 1134"><i>Zoom Rectangle</i></p>	Magnifies area selected	Allows you to draw a rectangle anywhere in the sky, and Starry Night will zoom in such that the view matches your drawn rectangle boundaries as closely as possible.
<p><i>The following symbols affect the object closest to the first point touched on the board with the pen, starting that symbol. Also note that these must all be done in a single stroke, without lifting the pen from the board.</i></p>		
 <p data-bbox="186 1585 332 1617"><i>Checkmark</i></p>	Selects an object	Draw a standard, left to right checkmark.

Gesture	Function	Description
 <p data-bbox="191 512 318 541"><i>Backslash</i></p>	<p data-bbox="626 277 863 306">Deselects an object</p>	<p data-bbox="1062 277 1425 382">Draw a standard backslash, starting top-right going to bottom left.</p>
 <p data-bbox="191 869 269 898"><i>Loupe</i></p>	<p data-bbox="626 598 863 627">Magnifies an object</p>	<p data-bbox="1062 598 1432 850">Place the pen on the board on the object to be magnified, circle right and up, then left and down, back to the object, and finish with a small “handle” facing down and to the right.</p>
 <p data-bbox="191 1226 253 1255"><i>Swirl</i></p>	<p data-bbox="626 955 837 984">Flies to an object</p> <p data-bbox="626 1014 964 1157">Note: Will only function on objects that have known distances and are plotted in our 3D universe.</p>	<p data-bbox="1062 955 1406 1245">Place the pen on the object, and form a swirl around the object, starting to the right and up then left and down. The object should be circled twice and the end of the stroke should be below the object.</p>
 <p data-bbox="191 1650 373 1680"><i>Question Mark</i></p>	<p data-bbox="626 1360 987 1390">Shows an objects information</p>	<p data-bbox="1062 1360 1425 1465">Place the pen on the object, and draw a standard question mark, ending without the dot.</p>